



The Ebble

December 2024

The Alvediston, Ebbesbourne Wake and Fifield Bavant Newsletter

Issue 471

Please could any copy for the January edition of The Ebble be sent to ebbleeditor@hotmail.com no later than December 20th 2024 (and any time earlier is even better!) Anything received after this date cannot be guaranteed to be included.

The Alfiwake Fund - Supporting our community Do you need help with your bills? Winter is approaching, energy prices remain high and the Winter Fuel Payment for pensioners has been cut. Can we help? We are able to make contributions towards electricity bills, logs, coal, heating oil, portable heaters, dehumidifiers and boiler services or repairs. We are not only here for seasonal support but for all of those unexpected bills too, whether that be car repairs, MOTs, washing machine repairs or replacements, or perhaps a new cooker. Our contributions are not limited to the examples listed, so please do get in touch if there is anything we may be able to help you with. Your request will remain confidential. Email: alfiwakefund@gmail.com Tel: Hugh Pelly - 780258, Janine Hillary - 780271, Bridget Watts - 780662, Carly Stainforth - 780848, or Andrew Boys - 780835

Volunteer Emergency Telephone System - V.E.T.S In the event of an emergency please dial 999, followed by 01722 581001; this will summon a local volunteer who will assist whilst waiting for the emergency services to arrive.

NEWS FROM THE VILLAGES

ALVEDISTON

Procession and Carol Service in Alvediston, Monday 23rd December.

Please join us in the yard at The Manor, (by kind permission of Rodney and Sue Heath) at 5.30pm for the procession to the candlelit church and the carol service at about 6pm. If you can't make the procession, do go straight to the church and bag the warmest seats! Dogs are welcome, on a lead please, to avoid entanglement with Mary's mount, Gordon aka the donkey. Everyone, of all ages, very welcome. Warm clothes, (and brollies) recommended.

CHRISTMAS WREATH WORKSHOP Saturday 30th December St Mary's Church Alvediston 10am-1pm

£75.00 per person for a course which includes mossing a 12" wire frame, wiring, seasonal foliage, decorative materials and wreath aftercare. Light refreshments. To book or enquire contact Alice Grant on 07768 351961 or aliceelizabethgrant1@gmail.com.

EBBESBOURNE WAKE

EBBESBOURNE WAKE PARISH COUNCIL

The next Parish Council meeting will be on 5th December 2024 in the Village Hall at 7.30pm. Members of the public are welcome. If you'd like to come along, please contact Sarah Cromwell (PC clerk) by phoning 780558 or emailing ewfbparishclerk@gmail.com.

THE ROYAL BRITISH LEGION

The Royal British Legion Poppy Appeal raised a total of £485.67. This was a combination of the villages of Fifield Bavant, Ebbesbourne Wake, West End, Parish Council, Fifield and Prescombe Shoot and The Horseshoe Inn.

A great thank you from the Armed Forces Community, who will benefit from your generosity.
Peter Trickett, RBL Co-ordinator.

CHRISTMAS BOXES for SALISBURY'S WOMENS REFUGE

For the last 8 years Helen White has been organising the village to donate shoe boxes full of gifts for the women's refuge in Salisbury - the shoe box can be filled with any gifts to suit a woman, boy, girl or mixed, and ideally suitably decorated but needs to be opened by them for checking - if you can drop them to me, Helen at The Old Forge by December 8th that would be great. Often these are the only gifts they receive so all are gratefully received. No alcohol though! Thank you in advance. 📺🎄🌲

EBBESBOURNE WAKE VILLAGE HALL NEWS

November has been very busy with events and ongoing upgrades to the gents and ladies toilet areas.

A heartfelt thank you to the committee team organising a splendid fireworks display, food and bar and to everyone who attended the fireworks night! We're thrilled to share that we managed to recoup the costs of the fireworks thanks to the generous contributions, ensuring the event remained accessible to all families. Your support made it possible to bring the community together for such a special occasion.

A special thanks to the talk organisers for hosting the "Last Para" talk by Stuart Tootal. What a powerful account! The event raised an impressive £340 each for the village hall and the Para charity—a fantastic outcome for a truly engaging evening.

Thank you all for your amazing community spirit.

We are so pleased to see the hall used for community events such as clothes sales, wine clubs, parties, meetings and talks. Do feel free to come to us with ideas, we are always happy to support or organise! Use your village hall!

The booking email is ebbesbournewakevillagehall@hotmail.com.

VILLAGE HALL CAR PARK - Annual Closure

We will be closing the Car Park for 24 hours (a legal requirement) from 8pm on Saturday 7 December until 8pm on Sunday 8 December. Please ensure you do not use it during this period. Thank you (Kate, on behalf of the VH Committee)

CAROLS in the VILLAGE HALL Monday 16th December 6.00pm- 8.00pm

Helen Lodge and Cathy Long, on behalf of the Village Hall Committee invite you to sing carols and mulled wine and mince pies. Please bring some cash as we are having a "donations pot" to be split between Alabare and the Village Hall, thank you.

MORE DATES for the DIARY

PRE-LOVED CLOTHES SALE Saturday 30th November 11am – 1pm in Ebbesbourne Wake Village Hall

We will have various stalls selling pre-loved women's (and children's) clothes & shoes, from brands like Missoni, Paul Smith, Jigsaw, Amanda Wakeley, Joules and COS. Sell clothes, shoes and bags/accessories. No bric a Brac. Bring some cash and bag yourself some new Christmas threads!

If you would like to sell your clothes, contact Anna on 07930 398432. £5 donation per seller will go to the Village Hall and gets you a trestle table! Set up from 9.30am.

The Alfiwake Film Club on Monday 2nd December

will show **Cinema Paradiso**, cited as one of the greatest films of all time and a world cinema classic.

https://en.wikipedia.org/wiki/Cinema_Paradiso.

Doors open at 7.00. Film starts at 7.30 prompt. £5. Please bring cash!

Drinks available to buy. Suggestions for future films welcome.

Hugh Pelly 01722 780258 hjwpelly@gmail.com.

Wreath Making at Bowerchalke Barn, Knowle Farm Sunday 8th December - 10:30am until 12:30

£65 per head - Ticket includes, professional instructor, all materials, hot drinks and mince pies.

Take home some amazing wreaths!

For Tickets email: Enquiries@bowerchalkebarn.com



**The King's Award
for Voluntary Service**

The MBE for volunteer groups

We are very proud to announce that Chalke Valley Community Hub has this week been awarded the Kings Award for Voluntary Service. This is given in order to celebrate the outstanding work of volunteers in local organisations and is granted to groups that are considered to be truly outstanding and who make a big difference to their local community. The award is equivalent to an MBE; it is the highest award given to local voluntary groups across the UK, and the award is for life. The award was created in 2002 by the late Queen, and His Majesty the King pledged to continue the Award to ensure that volunteers from across the UK are recognised for the services they provide within their communities. Nominations were made from across the UK, assessed locally, then nationally and finally, a shortlist was presented a few months ago to His Majesty the King for approval.

The granting of this award would not have been possible without the extraordinary work done by those who set up the Hub, by those who have volunteered in the past and by those who do so now, whether on the premises or behind the scenes.

We also have great news to tell you about our café; since Monday 11th November we had a new chef on board – Jay Baker, who comes to us with bags of experience and enthusiasm. We are once again able to offer hot food in the café and we hope that you will come and eat with us soon and sample the great food which Jay is already producing for us. As a new menu feature Jay will be offering cooked breakfasts in the café which are good value and will be delicious.

CHALKE VALLEY STORES www.chalkevalleystores.co.uk, email: info@chalkevalleystores.co.uk.

Home deliveries: If you need a delivery, please call the shop, 01722 780998.

Open weekdays 9.00am - 5pm, until 1.00pm on Saturdays.

Coffee Shop weekdays 10.00am - 3.30pm, 12.00pm on Saturdays.

Post Office: Monday, Tuesday & Thursday 9.30am to 1pm.

THE BOWERCHALKE DECEMBER MARKET Saturday December 14th 2024, 9.30 am - 12 noon in the Village Hall.

All the usual local produce - plus extra Christmas goodies and of course plenty of mince pies! There will be Helen's lamb, pheasant and partridge, Knowle Farm Beef and fresh local venison. Lesley's excellent pies, good winter soups, seasonal vegetables, preserves, honey and teatime treats. Outside Carolyn will be selling cheeses for the Christmas table and inside Lesley will be running the cafe. On top of this we have Christmas puddings and cakes for sale, mistletoe, wreaths and cards. Special stallholders will include local pottery from Jennie Gilbert and Tim and Cathy Brown, Vintage party clothes and jewellery, and luxurious face and hand creams. There will be a raffle with excellent prizes in aid of the Church. Do come and join us. For further information please contact lauraloncar.cvp@gmail.com

THE BISHOPSTONE COMMUNITY CAFÉ December 2024

CHRISTMAS FAYRE Friday 6th December from 6.00pm until 7.00pm.

The Hall will be open between 2.30pm and 3.30pm to receive donations. - contact Ian Smith on 780425. The Village Christmas Card this year will support the RNLI.

FRIENDS of BOWERCHALKE SCHOOL

Friends of Broad Chalke School are pleased to advise we now have an Astra Recycling clothing bank just by the main entrance of Broad Chalke Primary School. This recycling facility is open to all, to take your ready bagged donations throughout the year, at a time convenient to you. Sheets, towels, blankets, clothing, and shoes are all accepted by the recycling bank. Donations all help to raise money to support a variety of resources and activities for the children at the school.

CRESS BIG GIVE CHRISTMAS CHALLENGE 3rd - 10th DECEMBER 'DOUBLE YOUR DONATION'

Our Big Give Challenge has been Championed by The Reed Foundation.

Our project aims to:

- Increase access to affordable, sustainable financial services.
- Enhance business management, entrepreneurship, and financial literacy skills.
- Improve food security.
- Develop vocational skills to boost employment opportunities.

Supporting our Livelihood Project. The project depends on our Community Based Facilitators (CBFs), like Beatrice (above), who organise, train, and mentor our Livelihood Groups.

A portion of funds raised during Big Give 2024 will go towards training our CBFs in Sustainable Climate.

Smart Agriculture to enhance food production and nutrition.

CBFs continue to train group members and support them on the road towards self-sufficiency!

Starting on December 3rd, you'll have 7 days to donate to our campaign.

Every donation made through the Big Give website during this week will be doubled whilst match funds last

Save the date and double your donation - <https://bit.ly/cress-big-give>.

LUXURY ROMAN VILLA EXCAVATED by local community archaeologists in Wiltshire's Chalke Valley

Community volunteers were amazed to discover a major Roman villa in a small excavation run last month by Teffont Archaeology in the Chalke Valley in south Wiltshire. Funded by Cranbourne Chase National Landscape, over 60 volunteers helped excavate and record mosaics, painted wall plaster and large stone buildings at the site over two weeks. The site was initially highlighted by local metal-detectorists reporting a large number of Roman finds to the Portable Antiquities Scheme at Salisbury Museum, following which archaeologists were called in to investigate the site.

Dr David Roberts of Cardiff University, who co-directed the project, said "We're delighted to have discovered the first known Roman villa in this part of south Wiltshire working with our local volunteers. The site was likely the centre of a significant estate in the later Roman period, and its owners must have extracted a great deal of labour and surplus from the local farming communities to fund their luxury lifestyle."

The main villa house is over 35m long, with several additional buildings including a large bath house, a multi-storey barn, and an enigmatic concrete-floored structure which may have been an outdoor pool. The high-quality mosaics include elaborate geometric patterns and would have shown off the site's owners' cultural sophistication to visitors. Dr Denise Wilding of Teffont Archaeology, who co-directed the project, said "The high-status objects from the site, particularly furnishings such as the painted wall plaster and columns, demonstrate the wealth and power of those living here. These artefacts are especially significant due to the lack of recent excavations of high-status sites in this area".

The project is part of the Chase and Chalke Landscape Partnership, run by Cranbourne Chase National Landscape and funded by lottery players through the National Heritage Lottery Fund. Rob Lloyd, who manages Chase and Chalke, said "Everyone at Chase and Chalke is really excited by these discoveries made by our local communities. Over the summer we've worked with Teffont Archaeology to provide hundreds of free volunteering opportunities in archaeology at two projects and have seen the immense difference these activities make to people's wellbeing and engagement with their local heritage".

The archaeological team will now work on analysing the finds from the site, and next year will give a range of talks locally about the results. Volunteers will also be taking part in processing the finds and learning about the site in events at Salisbury Museum, who are partners in the project.

CHRISTMAS DIARY DATES in the VALLEY

5 th December.	Stratford Tony - Carols
8 th December.	Charlton All Saints - Christingle
18 th December.	Carols around Bowerchalke, 6pm at Bowerchalke Barn
19 th December	Broad Chalke - Carols 7.00pm
19 th December	Coombe Bissett - Christingle 6.00pm
20 th December	Britford - Carols
20 th December	Nunton Farm - 'Nativity in the Barn' 5.30pm
21 st December	Berwick St John - Lantern Parade & Carols 6.30pm
22 nd December	Nunton - Carols 5.30pm
22 nd December	Broad Chalke - Nativity 4.00pm
23 rd December	Alvediston - Procession & Carols

CHURCH MATTERS

NOTES from a CHURCHWARDEN, David Walsh

"What would a political vision be like that was rooted in contemplative awareness and the recognition of the mystery of the personal, reconciling a dimension of human existence as a realm of uniqueness and resistance both to homogenising external authority and to the tyranny of individualism....

One can locate authentic Christianity as a point of balance between the excesses of collectivism and individualism alike."

Looking East in Winter - Rowan Williams

Church Flowers and cleaning – December 2024

Alvediston -	Vicki Brown & Jenny McVeigh
Ebbesbourne Wake -	Advent (No altar flowers), Carla Walsh and Angelika Hamilton
	Christmas - Team
Fifield Bavant -	Pip Reis

ST JOHN'S TISBURY

Exciting news from Tisbury where the parish church of St John's is about to reveal a new East Window. After a project, for which fundraising started as far back as 2009, to replace the deteriorated Victorian one, the new window was completed last week. Designed by internationally renowned stained glass artist, Tom Denny, the unveiling will take place on Saturday December 7th in time for visitors to the Christmas market - 'Tis the Season' - and at the parish communion at 9.30 on Sunday 8th we will celebrate the arrival of the new east window.

As a memorial window, funds for it have been raised by individuals sponsoring the glass in memory of a loved one, a family, or just for the joy of being part of the project. In the age of cremations and no new headstones in the graveyards this has proved very popular.

The names of the people remembered, and those of their sponsors, will be collated in an accompanying memorial book to be on permanent display in the church, providing a historical document for the future. We hope as many people as possible will come and see and enjoy this wonderful new addition to the church.


For further information please visit the website www.eastwindowtisbury.com, or email info@eastwindowtisbury.com 01722 632010.



Services in Chalke Valley Benefice – December 2024

BCP = Book of Common Prayer (Traditional Language), CW = Common Worship (Contemporary Language)



1 December 1st Sunday of Advent	9.30am Holy Communion (BCP) 9.30am Family Communion (CW) 9.30am Parish Communion (CW) 11.00am Morning Prayer (BCP) 11.00am Parish Communion (CW) 11.00am Family Service 11.00am Advent Service 4.00pm Christingle	Berwick St John Broad Chalke Britford Ebbesbourne Wake Coombe Bissett Odstock Bishopstone Bowerchalke	Alison Waterhouse Kate Woolven Ruth H-S Biddy Trahair Jenny Taylor Adrian Taylor Sally Leaver Kate Woolven
5 December	6.00pm Carol Service	Stratford Tony	Jenny Taylor
8 December 2nd Sunday of Advent	9.30am Parish Communion (CW) 9.30am Family Communion (CW) 10.30am Worship Together 11.00am Morning Prayer (BCP) 11.00am Family Communion (CW) 11.00am All Age Service 3.00pm Evening Prayer (BCP)	Bowerchalke Nunton Broad Chalke Hub Charlton All Saints Coombe Bissett Alvediston Fifield Bavant	Alison Waterhouse Maggie Metcalfe Lay Led Rhoddy Voremberg Jenny Taylor Biddy Trahair Biddy Trahair
15 December 3rd Sunday of Advent	9.30am Parish Communion (CW) 11.00am Family Communion (CW) 11.00am Parish Communion (CW) 11.00am Carol Service 11.00am Parish Communion 6.00pm Carol Service 6.00pm Carol Service	Odstock Ebbesbourne Wake Berwick St John Bishopstone V Hall Homington Bowerchalke Coombe Bissett	Ruth H-S Kate Woolven Alison Waterhouse Jenny Taylor Ruth H-S Kate Woolven Jenny Taylor
20 December	6.00pm Carol Service	Britford	Ruth H-S
22 December 4th Sunday of Advent	9.30am Parish Communion (CW) 11.00am Parish Communion (CW) 11.00am Holy Communion (BCP) 11.00am Morning Prayer (BCP) 4.00pm Nativity 5.30pm Carol Service 6.00pm Carol Service	Charlton All Saints Bishopstone Alvediston Homington Broad Chalke Nunton Berwick St John	Ruth H-S Jenny Taylor Alison Waterhouse Rhoddy Voremberg Alison Waterhouse Ruth H-S / M Metcalfe Alison Waterhouse
23 December	6.00pm Procession & Carols	Alvediston	Lay Led
24 December CHRISTMAS EVE	4.00pm Carols round the Crib 4.00pm Scratch Nativity 6.00pm Carol Service 10.00pm 'Midnight' Eucharist (CW)	Bishopstone Charlton All Saints Homington Fifield Bavant	Jenny Taylor Ruth H-S Jenny Taylor Ruth H-S
25 December CHRISTMAS DAY 	8.00am Holy Communion (BCP) 9.30am Parish Communion (CW) 9.30am Parish Communion (CW) 9.30am Parish Communion (CW) 9.30am Family Communion (CW) 11.00am Family Communion (CW) 11.00am Family Communion (CW) 11.00am Family Communion (CW) 11.00am Family Communion (CW)	Homington Bowerchalke Charlton All Saints Bishopstone Broad Chalke Ebbesbourne Wake Coombe Bissett Odstock Berwick St John	Jenny Taylor Kate Woolven Maggie Metcalfe Jenny Taylor Alison Waterhouse Kate Woolven Jenny Taylor Ruth H-S Alison Waterhouse
29 December 1st Sunday of Christmas	10.00am Benefice Communion (CW)	Britford	Ruth H-S
5 January THE EPIPHANY	9.30am Holy Communion (BCP) 9.30am Family Communion (CW) 9.30am Parish Communion (CW) 11.00am Morning Prayer (BCP) 11.00am Parish Communion (CW) 11.00am Family Service	Berwick St John Broad Chalke Britford Ebbesbourne Wake Coombe Bissett Odstock	Alison Waterhouse Ruth H-S Maggie Metcalfe Biddy Trahair Jenny Taylor Adrian Taylor

Ministry Team:

Team Rector ~ The Revd Dr Ruth Howlett-Shiple: 01722 697022
Team Vicars ~ The Revd Canon Jenny Taylor: 01722 503081, The Revd Alison Waterhouse: 07904 034221
Associate Priests ~ The Revd Maggie Metcalfe: 01722 325825, The Revd Kate Woolven: 07754 582395
Team Administrator ~ Mrs Emily Broomhead: 07890 262376

Assisting Clergy:

The Revd Canon Anthony Hawley: 01794 390607, The Revd Canon Tony Monds: 07808 614597

Lay Worship Leaders:

Yvonne & Kevin Follett: 01747 828785, Caroline Lamb: 01722 780789, Sally Leaver: 01722 780447,
Naomi Martin: 07713031774, Don Morgan: 01722 718557, Adrian Taylor: 01722 325862, Janet Roe: 01725 519242,
Biddy Trahair: 01722 780666, Rhoddy Voremberg: 07785 304142, James Wardroper: 01722 718152

Advent service in Fifield, Sunday 8th December, 3pm. Following the popular tradition of some years, there will be a contemplative service of poems, Bible readings and hymns for Advent instead of the usual Evensong. All very welcome.

NEW VIC TISBURY December 2024

TAG present A Christmas Carol

Magic Lantern Film Club, Alcarra

TROUBADOUR STAGEWORKS 'Fix the Folio'

The Royal Ballet CINDERELLA [Revival] ENCORE: Sunday 15 December, 6.00pm

Friday December 6th at 7.30 pm & 8th at 2.30 pm.

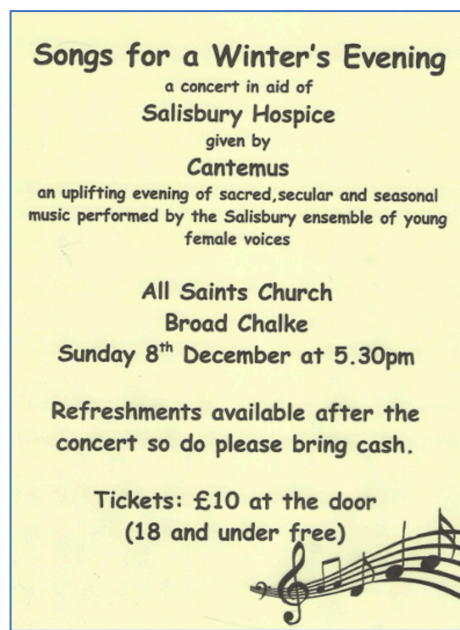
Sunday 8th Dec 7.00 pm. Doors open 6.30 pm.

December 13th 7.30pm

Tickets available from www.newvictisbury.com, email newvictisbury@gmail.com or call 0300 302 3090.

BERWICK ST JOHN TALBOT INN Re-opening Sunday 1st December

Polly and Mark Waddington, the new Management Team along with Coco the labradoodle will be re-opening their doors to the public for drinks and food. polly@talbotinnberwickstjohn.co.uk



ADVERTISEMENTS

Landscape and Garden Design: qualified Landscape Architect with 35+ years professional experience. If you're looking for an innovative landscape design, a solution to a tricky garden layout, help with a planning application or perhaps ideas for a new planting scheme please contact RT Design Landscape Architects on 07979 954996 or email Rachel at rtdesign.la@gmail.com.

Richard Harris: Personal Training, Nutrition Advice for all dietary requirements, Sports Massage, Injury Rehabilitation/Prevention, Deep Tissue, and Relaxation Massage. Please Feel Free to call 07425 620003 email: richardspersonaltraining@gmail.com

DW Plastering and Decorating service, including lime plastering, rendering and pointing. Female run business serving Chalke Valley and surrounds. Fully insured and enhanced DBS check. Phone: 07598 023384

Email: dwfemaleplasterer@hotmail.com Facebook: DW Plastering and Decorating Service

Max Turney - Fern Joinery – Windows, Doors, Kitchens, Bespoke Carpentry and more.
max@fernjoinery.com, 07900 987406, www.fernjoinery.com

K H Soft Furnishings (including B V Foam Supplies) bespoke soft furnishings: curtains, blinds cushions etc as well as foam cut to size and material by the metre. Contact info@khsoftfurnishings.com 07810 661000 or 01722 780742

JD Vehicle services, Manor Farm, Fifield Bavant.
Vehicle paint and body repair. Contact Joe on 07980 350484 or jdvehicleservices@hotmail.co.uk

Charlotte Steel VTCT IIHHT - Holistic and Complementary Therapist Reflexology, Swedish and Aromatherapy Massage, Essensa Ayuurvedic Facial, Plus Hot Stone Massage call The Chapel, Bowerchalke, Tel 01722 780107 Email cjsteel92@gmail.com

M J Stares Carpentry and Building Services Bespoke Carpentry and Building Services in the Chalke Valley and the surrounding areas
www.mjstarescarpentry.co.uk, matt@mjstarescarpentry.co.uk 07837 12518

Local grass-fed lamb and Dexter beef from Knowle Farm always available, and pork/sausages often available. Please enquire: Hugo Mann, 07974453623, Dmannandson@outlook.com

Filthy Squirrels Woodland Nursery, Manor Farm Fifield Bavant. Ofsted rated Outstanding. For all information, please visit www.filthysquirrels.co.uk

Gurston Down Speed Hill Climb – the South's premier Speed Hill Climb venue – near Broad Chalke. www.gurstondown.org or follow us on Facebook



Septic Tank Owners: register your interest in a fully-funded upgrade to a treatment plant.

Due to the Phosphate pollution in your local river catchment we are operating a septic tank replacement scheme using private funding.

We install wastewater treatment plants that remove almost all pollutants, with funding secured from planning applicants who need to create a positive impact on the environment.

Register on our website today.

burrow-environmental.com 01935 507 508

